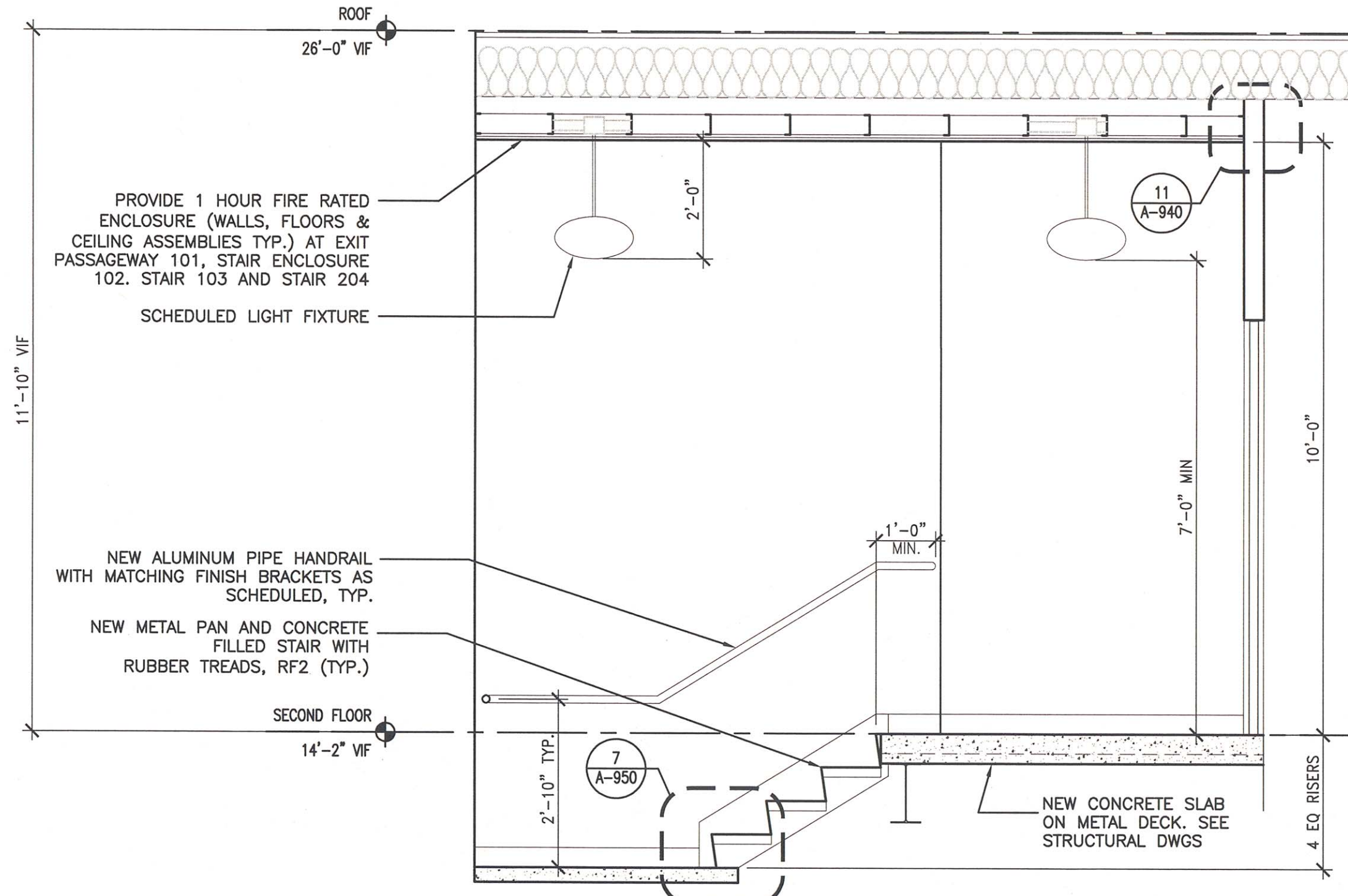
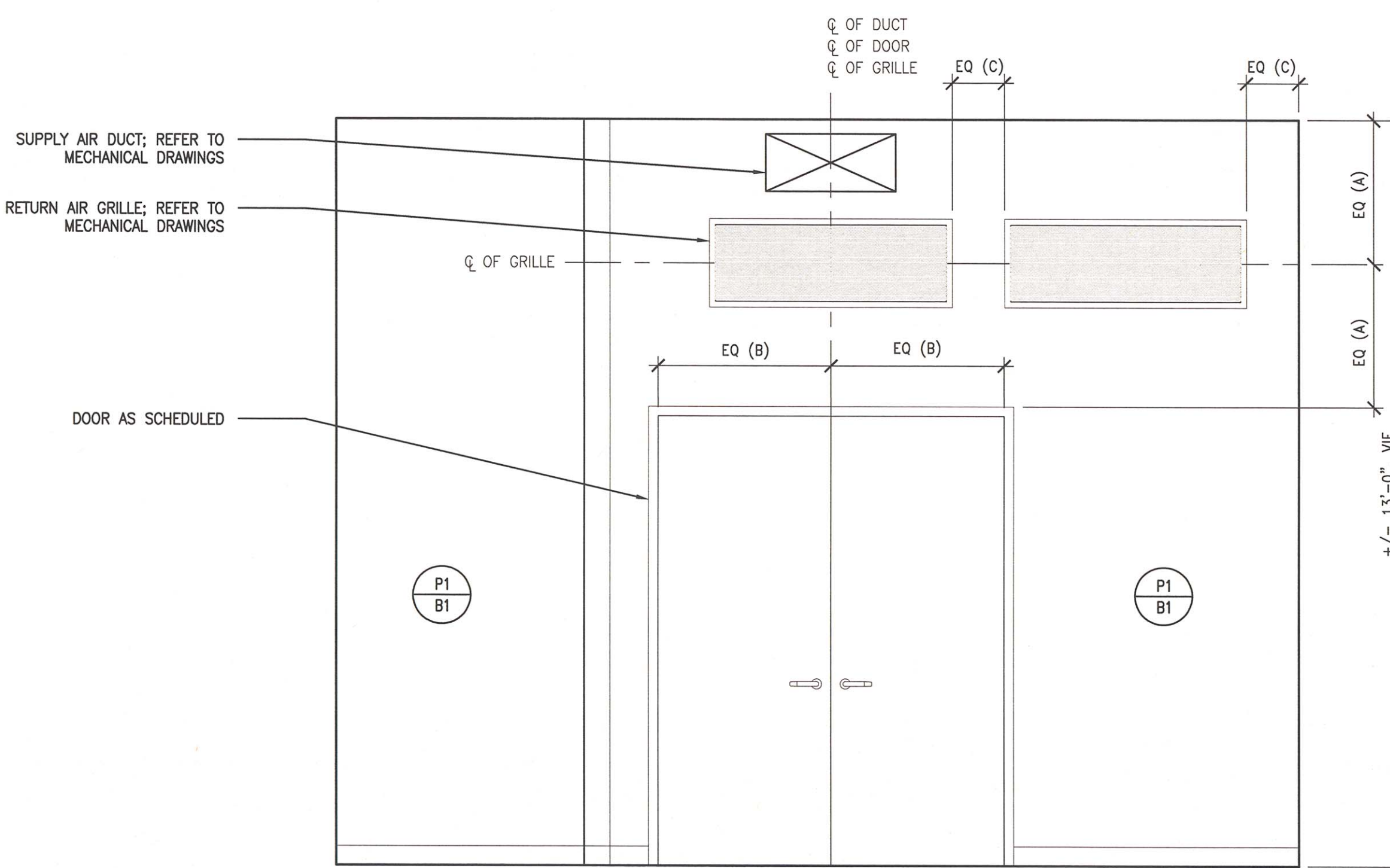


1 STAIR ENCLOSURE 102 AND STAIR 103 WEST SECTION / ELEVATION
SCALE: 1/2" = 1'-0"



2 STAIR 204 NORTH SECTION / ELEVATION
SCALE: 1/2" = 1'-0"

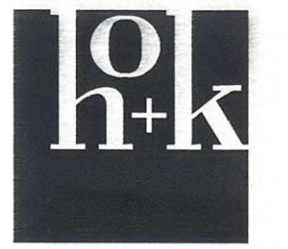


3 COMMUNITY ROOM 113 NORTH ELEVATION
SCALE: 1/2" = 1'-0"

Project
BROOKLYN
PHILHARMONIC
MUSIC CENTER
299 DeGraw Street, Brooklyn, NY 11231

Prepared for
Brooklyn Philharmonic
55 Washington Street, Suite 656
Brooklyn, NY 11201

Contract No: 79.07250.09



HOK
1065 Avenue of the Americas
New York, NY 10018 USA
T +1 212 741 1200 F +1 212 633 1163

All reproduction & intellectual property rights reserved © 2012
HOK Association with



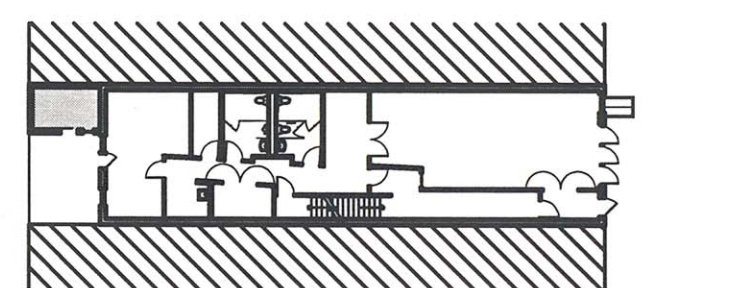
NYC Department of Design + Construction
30-30 Thompson Avenue, 8F-079
Long Island City, NY 11101

Old Structures
Structural Engineers
111 Broadway, 14th Floor
New York, NY 10006

M-E Engineers
MEP Engineers
29 West 38th Street, 5th Floor
New York, NY 10018

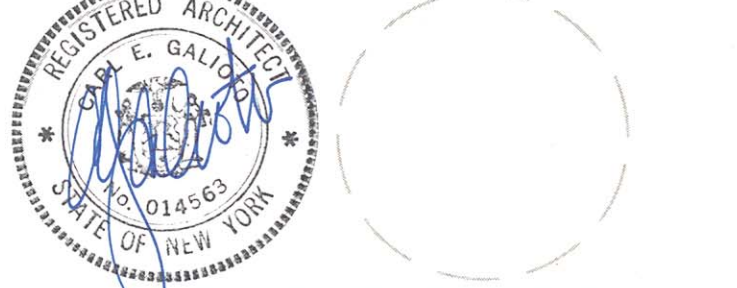
Syska Hennessy Group
Lighting Consultant
11 West 42 Street
New York, NY 10036

Key Plan



BLOCK: 414
LOT: 61

Professional Seal



It is a violation of the law of the State of New York for any person, unless acting under the direction of a licensed architect, to alter any item on these drawings.

No.	Issue Description	MM-DD-YYYY
01	ISSUED FOR TILING	05-14-2012
02	ISSUED FOR BID	07-26-2012

No.	Revision Description	MM-DD-YYYY
-----	----------------------	------------

B-Scan

Drawn by SL Reviewed by SW
Project No. 79.07250.09
Date June 1, 2011
CAPS ID PV467BPHL

Sheet Title

STAIR SECTION/
ELEVATIONS &
INTERIOR ELEVATIONS

Sheet Number

A-801.00

Original drawing to 42 x 30. Do not scale contents of this drawing