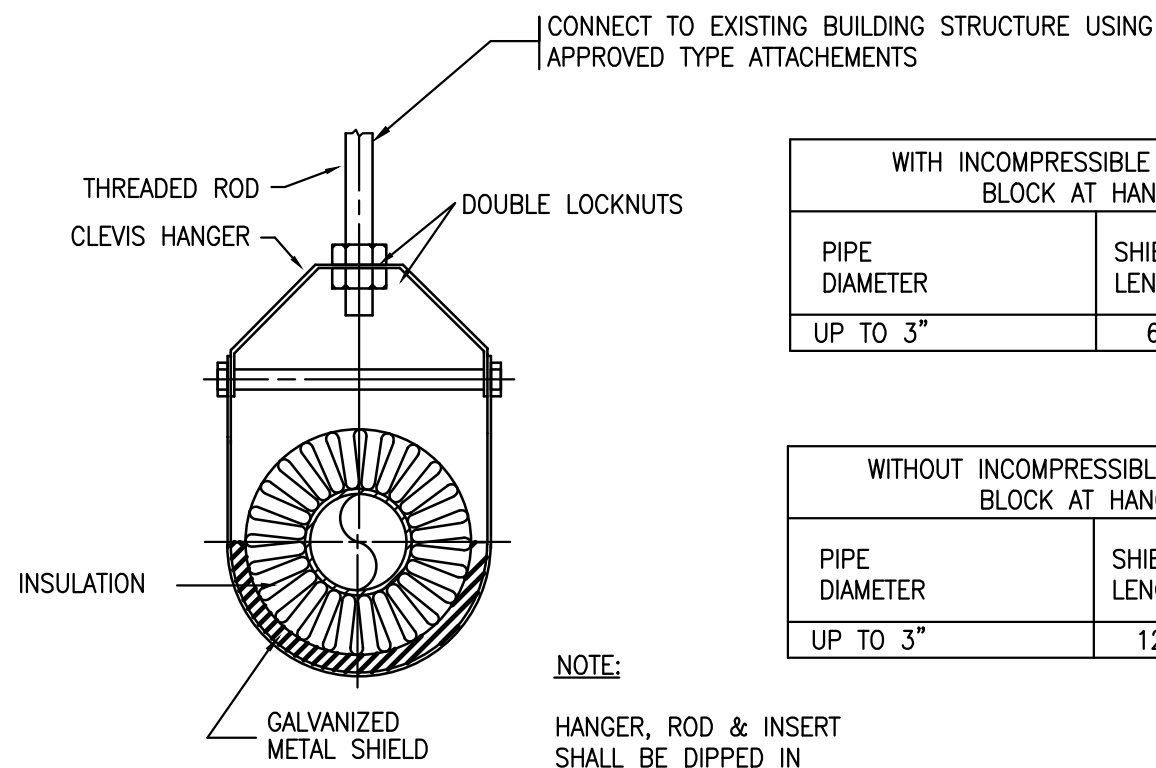
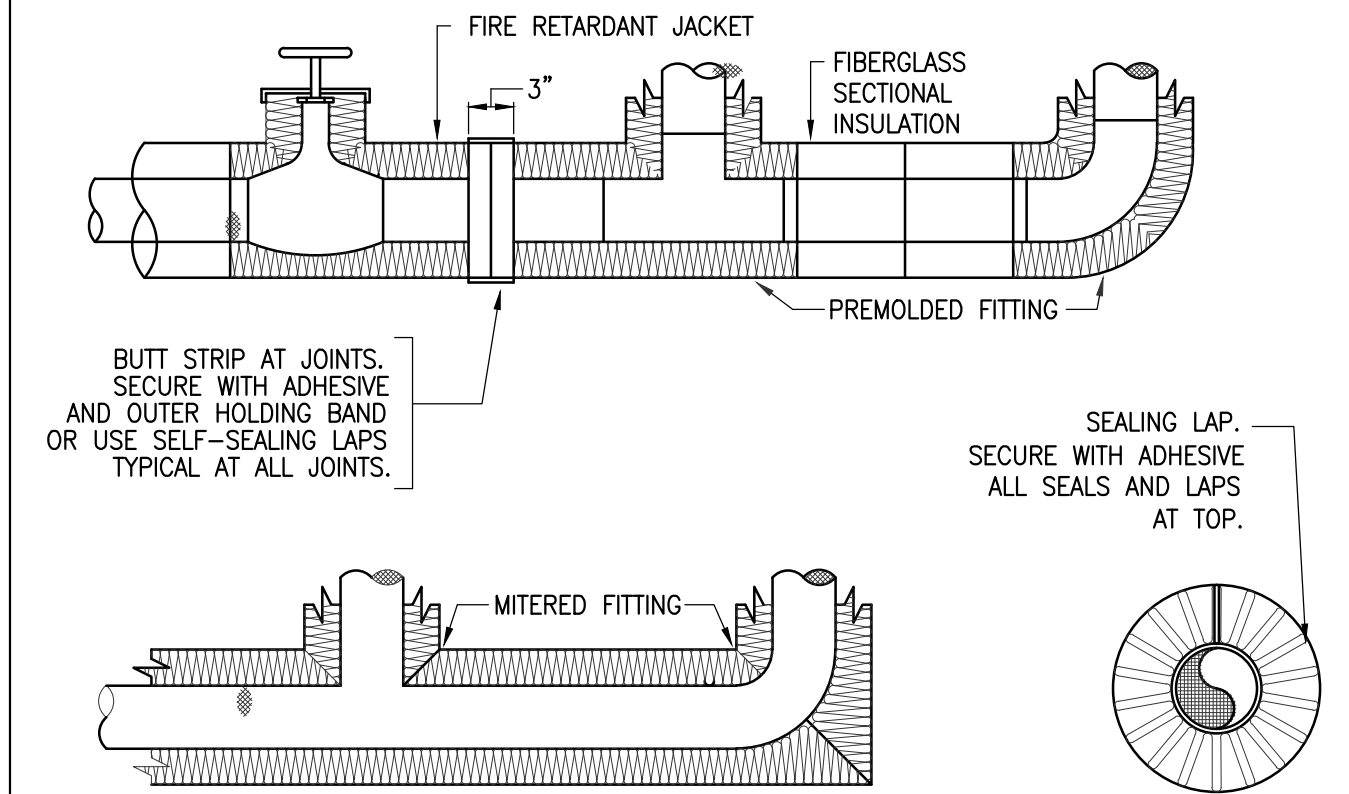
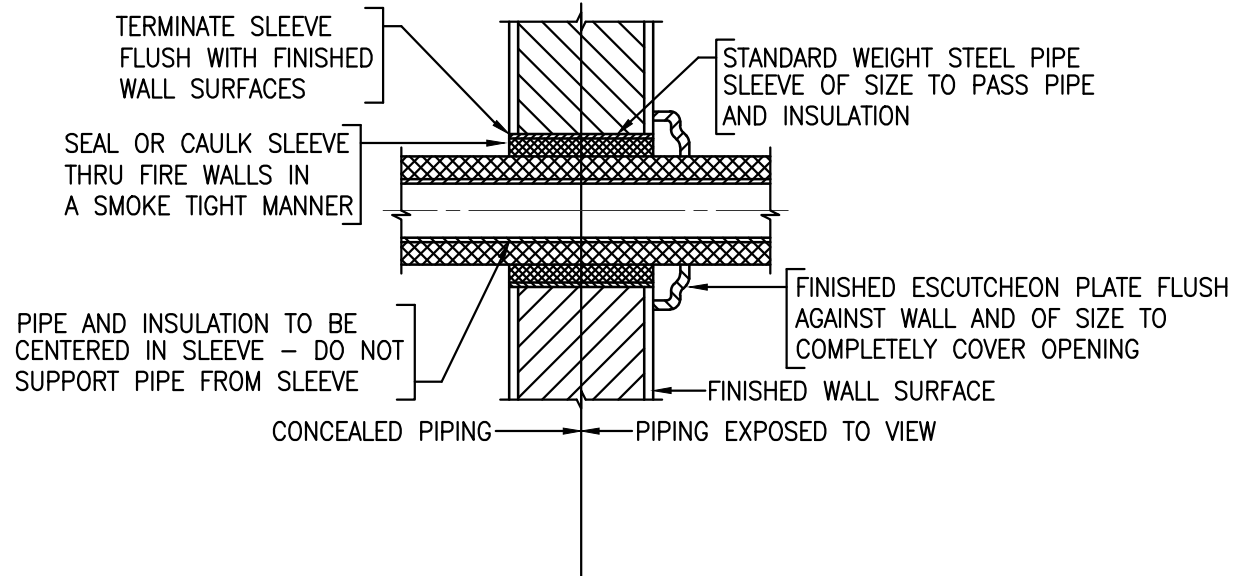


- CONCEALED VALVES AND FITTINGS**
- WRAP WITH 1 INCH THICK, 1 POUND DENSITY TO REQUIRED PIPE INSULATION THICKNESS.
 - SECURE WITH WIRE OR TAPE.
 - VAPOR SEAL COLD WATER, CHILLED WATER AND STORM WATER PIPING.
- EXPOSED VALVES AND FITTINGS**
- PREMOLDED FIBERGLASS OR RADIAL MITERED PIPE INSULATION.
 - SKIM COAT OF INSULATION CEMENT.
 - COAT OF MASTIC.
 - WRAP WITH FIBERGLASS REINFORCING CLOTH.
 - FINISH COAT OF MASTIC.
 - OVERLAP 2 INCHES ON PIPE INSULATION.



WITH INCOMPRESSIBLE INSULATING BLOCK AT HANGER		
PIPE DIAMETER	SHIELD LENGTH	SHIELD THICKNESS USSG
UP TO 3"	6"	18

WITHOUT INCOMPRESSIBLE INSULATING BLOCK AT HANGER		
PIPE DIAMETER	SHIELD LENGTH	SHIELD THICKNESS USSG
UP TO 3"	12"	18



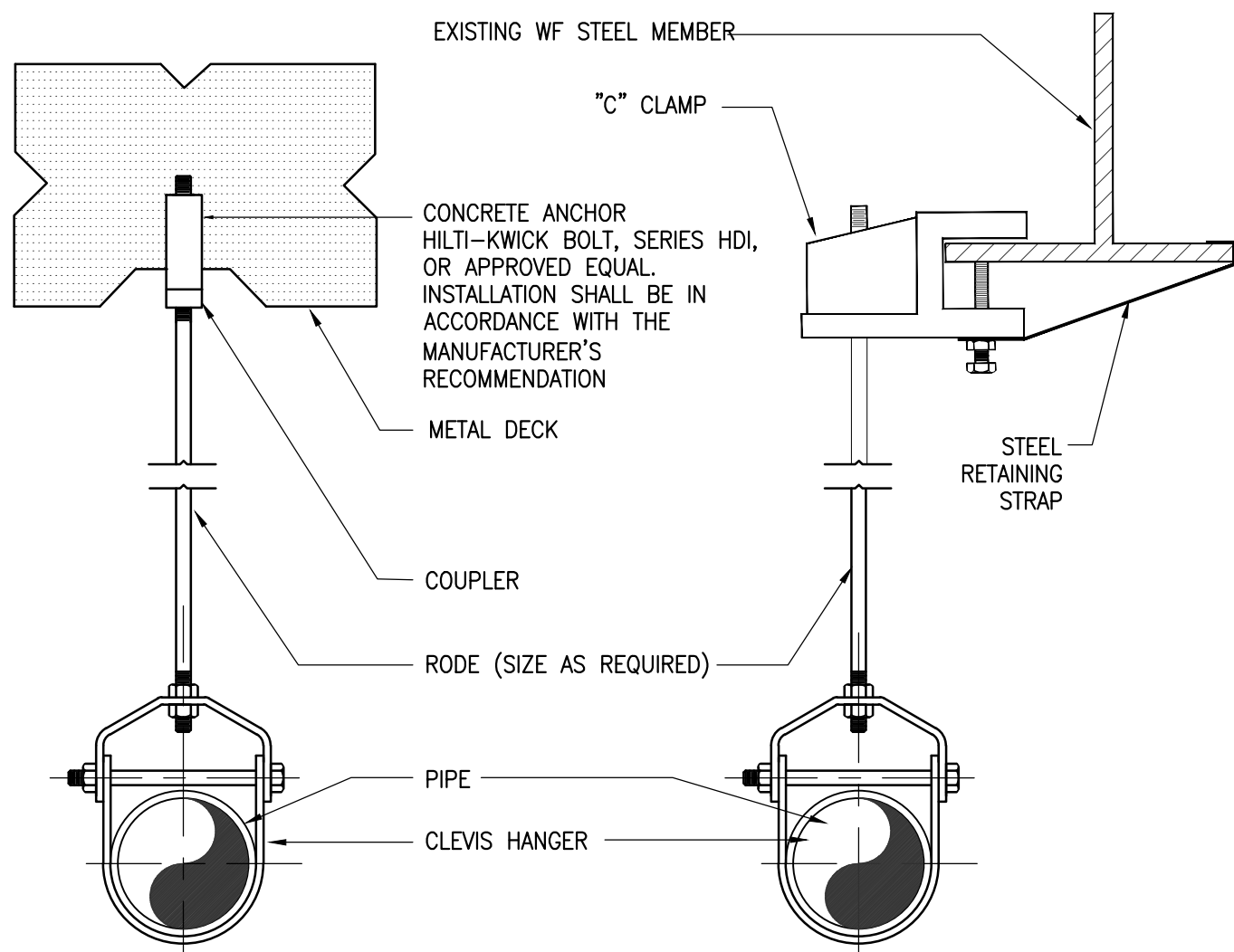
INTERIOR WALLS

UL #WL5029

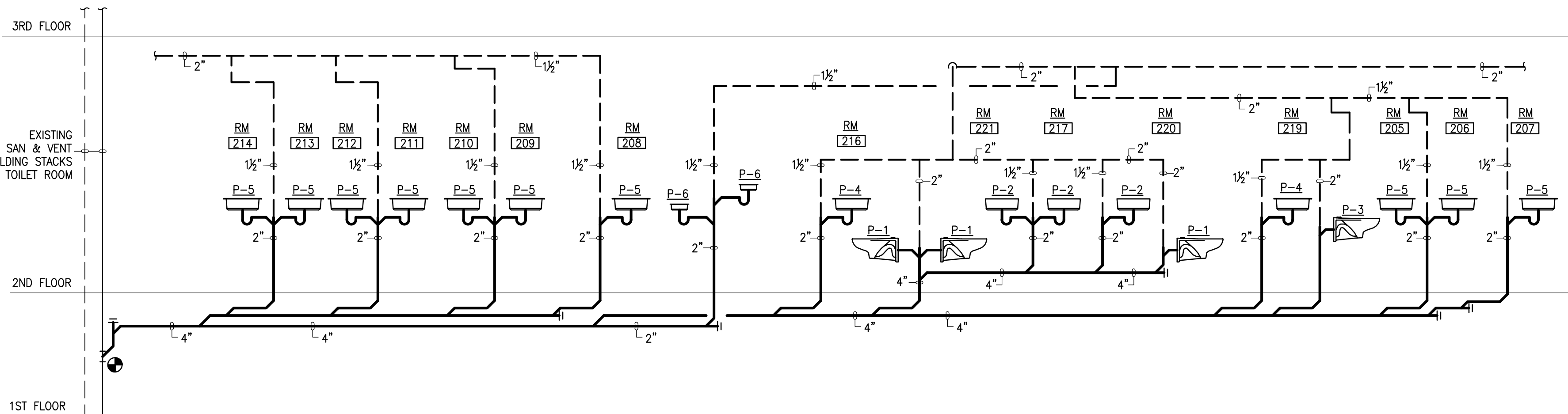
220700 INSULATION OF PIPING, VALVES AND FITTINGS FOR EXPOSED AND CONCEALED LOCATIONS

220529 TYPICAL INSULATED PIPE SUPPORT

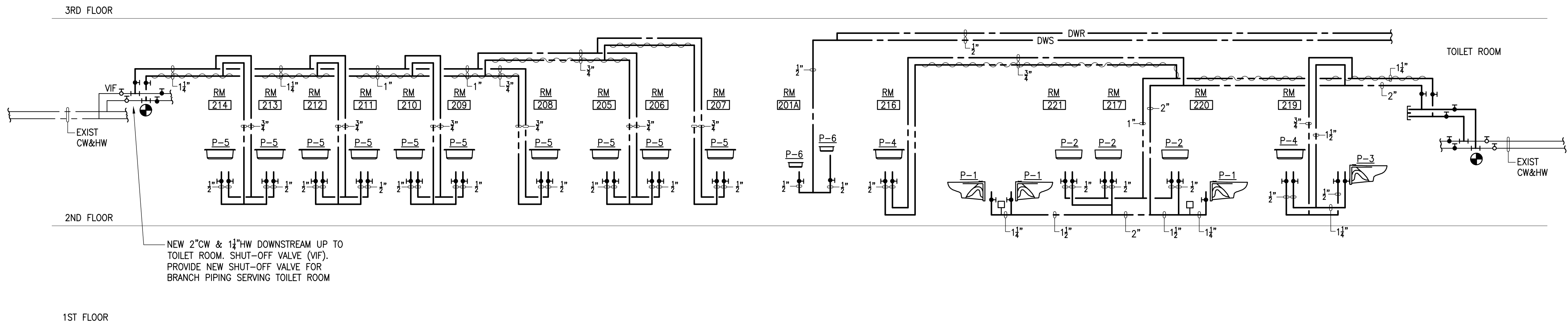
220500 PIPE SLEEVES THROUGH WALL



220529 CLEVIS HANGER DETAIL



SANITARY RISER DIAGRAM
N.T.S.



DOMESTIC WATER RISER DIAGRAM
N.T.S.

THIS PLAN IS APPROVED ONLY FOR WORK INDICATED ON THE APPLICATION SPECIFICATION SHEET. ALL OTHER MATTERS SHOWN ARE NOT TO BE RELIED UPON, OR TO BE CONSIDERED AS EITHER BEING APPROVED OR IN ACCORDANCE WITH APPLICABLE CODES.

DOB EMPLOYEE STAMPS AND SIGNATURES.

DOB BSCAN STICKER.

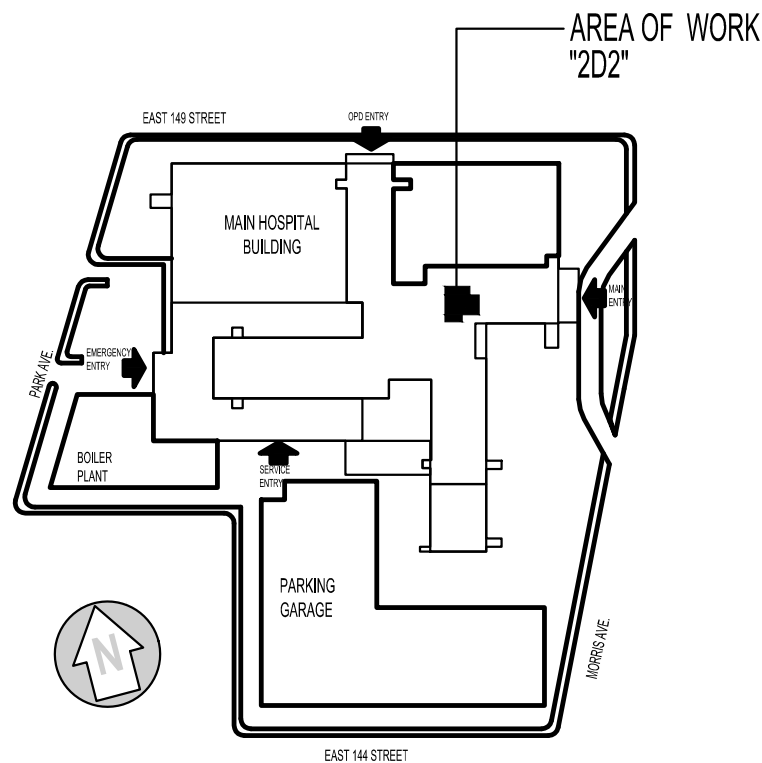
REVISION DATE

06-25-2012

ISSUED TO DOB

REASON FOR ISSUE

KEY PLAN :



CLIENT:

HHC NEW YORK CITY HEALTH AND HOSPITALS CORPORATION

CLIENT:

LINCOLN MEDICAL AND MENTAL HEALTH CENTER
234 East 149th Street, Bronx, New York 10451

ARCHITECT:

M J C L Architects, PLLC
1416 Avenue M, Brooklyn, NY 11230
Tel.: (718) 339-3390 Fax: (718) 339-3642

ENVIRONMENTAL ENGINEERING CONSULTANT:

Lilker Associates
Consulting Engineers, PC
1001 Avenue of the Americas, New York, NY 10018
tel 212.695.1000 fax 212.695.1299 www.lilker.com

PROJECT:

NEW CLINIC RENOVATION AT SECOND FLOOR
234 East 149 Street Bronx, NY 10451

DRAWING:

PLUMBING DETAILS & RISER DIAGRAMS

SCALE: 1/4"=1'-0"

DRAWN BY: -

CHECKED BY: PF

DATE: 09-06-2011

JOB #: 21115.00

DRAWING #:

P-201.00

29 of 36