

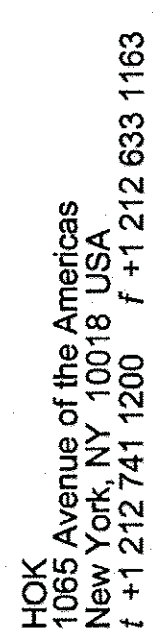
1. REFER TO ARCHITECTURAL PLANS FOR ADDITIONAL DEMOLITION INFORMATION.
2. ALL DEVICES AND FIXTURES INDICATED WITH A DASHED LINE, "E" OR "EXISTING" DENOTES EXISTING TO REMAIN. PROVIDE ADEQUATE PROTECTION DURING DEMOLITION AND CONSTRUCTION.

(SOME KEY NOTES MAY NOT APPLY TO THIS SHEET.)

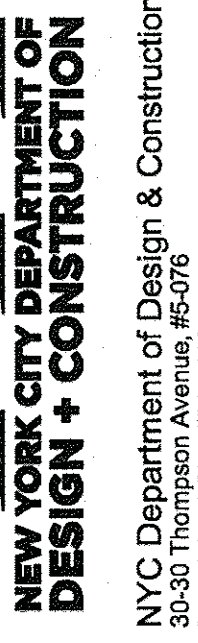
- 1 DISCONNECT AND REMOVE ALL EXISTING RECEIPELAPS, JUNCTION BOXES, INTERCOMS, TIME CLOCKS, TELLTALES, AND EXISTING CONDUIT AND WIRE BACK TO POINT OF ORIGIN.
- 2 DISCONNECT AND REMOVE ALL EXISTING LIGHT FIXTURES AND ASSOCIATED SWITCHING, UNLESS OTHERWISE NOTED. REMOVE ASSOCIATED CONDUIT AND WIRE BACK TO POINT OF ORIGIN.
- 3 DISCONNECT AND REMOVE ALL EXISTING FIRE ALARM SPEAKER STROBES, PULL STATIONS, BELLS, AND OTHER FIRE ALARM EQUIPMENT. REMOVE ASSOCIATED CONDUIT AND WIRE BACK TO POINT OF ORIGIN.
- 4 DISCONNECT AND REMOVE ALL EXISTING POWER, DISCONNECT SWITCHES, AND CONTROLS ASSOCIATED WITH OVERHEAD DOOR. REMOVE ALL ASSOCIATED CONDUIT AND WIRE BACK TO POINT OF ORIGIN.
- 5 REMOVE EXISTING EXTERIOR LIGHT FIXTURES. REMOVE ASSOCIATED CONDUIT AND WIRE BACK TO POINT OF ORIGIN.
- 6 DISCONNECT AND REMOVE EXISTING TELEPHONE DISTRIBUTION, EXISTING EXTERIOR TELEPHONE EQUIPMENT, EXISTING ASSOCIATED CONDUIT AND WIRE BACK TO POINT OF ORIGIN.
- 7 DISCONNECT AND REMOVE EXISTING ALARM PANEL, MAIN SERVICE AND DISCONNECT SWITCHES, AND METERING ALONG WITH ALL ASSOCIATED WIRE CONDUIT.
- 8 EXISTING POWER CONNECTION TO EXISTING FLOOR TO BE REMOVED. REMOVE ALL WIRE, RETURN TO POWER PLAN FOR ADDITIONAL INFORMATION.
- 9 DISCONNECT AND REMOVE EXISTING TELEPHONE EQUIPMENT AND EMERGENCY POWER SYSTEM. REMOVE ALL ASSOCIATED CONDUIT AND WIRE BACK TO POINT OF ORIGIN.
- 10 DISCONNECT AND REMOVE EXISTING EXTERIOR SIGNALS, ALARMS, AND LIGHTS. REMOVE ASSOCIATED CONDUIT AND WIRE BACK TO POINT OF ORIGIN.
- 11 DISCONNECT AND REMOVE EXISTING RADIO CHARGING STATION. REMOVE ALL ASSOCIATED CONDUIT AND WIRE BACK TO POINT OF ORIGIN.
- 12 REMOVE ALL EXISTING EXTERIOR LIGHTING CONTROL SYSTEM. REMOVE ALL ASSOCIATED CONDUIT AND WIRE BACK TO POINT OF ORIGIN.
- 13 DISCONNECT AND REMOVE EXISTING PANELBOARDS. REMOVE ASSOCIATED CONDUIT AND WIRE BACK TO POINT OF ORIGIN.
- 14 DISCONNECT AND REMOVE ALL EXISTING CEILING FANS. REMOVE ALL ASSOCIATED CONDUIT AND WIRE BACK TO POINT OF ORIGIN.
- 15 DISCONNECT AND REMOVE TERMINAL BOXES, CIRCUIT BREAKERS, EXISTING EXTERIOR AND EXISTING SWITCH. REMOVE ALL ASSOCIATED CONDUIT AND WIRE BACK TO POINT OF ORIGIN.
- 16 DISCONNECT AND REMOVE THE CLOCK SYSTEM. REMOVE ALL ASSOCIATED CONDUIT AND WIRE BACK TO POINT OF ORIGIN.
- 17 DISCONNECT AND REMOVE DISCONNECT SWITCH, ALONG WITH ASSOCIATED CONDUIT AND WIRE BACK TO POINT OF ORIGIN.
- 18 REPLACE EXISTING DISCONNECT SWITCH FOR EXISTING AC POWER IN HAND. REPLACE WIRING AND CONDUIT IN HAND. REFER TO POWER PLAN FOR ADDITIONAL INFORMATION.
- 19 EXISTING DUCT DETECTOR TO BE REPLACED WITH NEW. REMOVE ALL ASSOCIATED CONDUIT AND WIRE BACK TO POINT OF ORIGIN.
- 20 DISCONNECT AND REMOVE ALL EXISTING OUTDOOR LIGHT FIXTURES, ALARMS, BELLS, ETC., LOCATED ON THE FRONT AND BACK YARD. REMOVE ALL ASSOCIATED CONDUIT AND WIRE BACK TO POINT OF ORIGIN.
- 21 DISCONNECT AND REMOVE ALL EXISTING POWER CONNECTIONS TO MECHANICAL EQUIPMENT BEING REMOVED. UNLESS OTHERWISE NOTED, REMOVE ALL ASSOCIATED CONDUIT, SUPPLIES, EQUIPMENT, AND WIRE BACK TO POINT OF ORIGIN.

299 DeGraw Street, Brooklyn, NY 11231

Contract No: 79.07250.09



All reproduction & intellectual property rights reserved © 2011
in Association with



Old Structures
Structural Engineers
111 Broadway, 14th Floor
New York, NY 10005

M-E Engineers

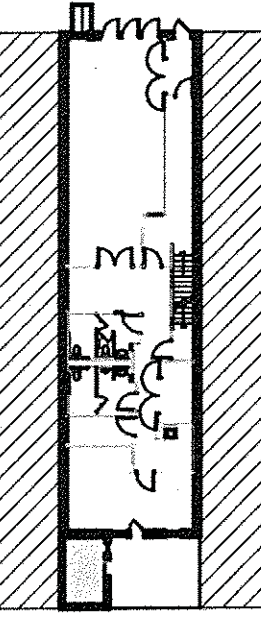
MEP Engineers
29 West 38th Street,

New York, NY 10018

Syska Hennessy Group
Lighting Consultant

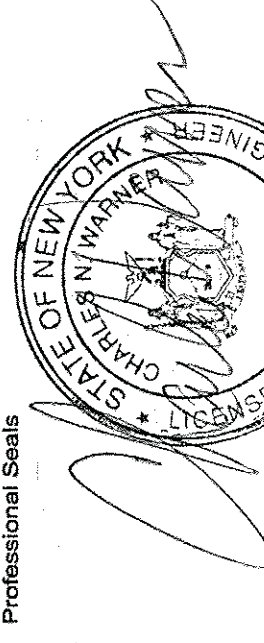
11 West 42 Street
New York, NY 10036

Key Points



BLOCK: 41
LOT: 61

Professional Seals



It is a violation of the law of the State of New York for any person, unless acting under the direction of a licensed architect, to alter any item on these drawings.

| No. | Issue Description | MM-DD-YYYY |
|-----|-------------------|------------|
| 1 | ISSUED FOR FILING | 06-14-2012 |
| 2 | ISSUED FOR BID | 07-20-2012 |

[illegible]

8:50am

Sheet Title
SECOND FLOOR
AND ROOF
ELECTRICAL

DEMOLITION PLANS
Sheet Number:

ED-102.00