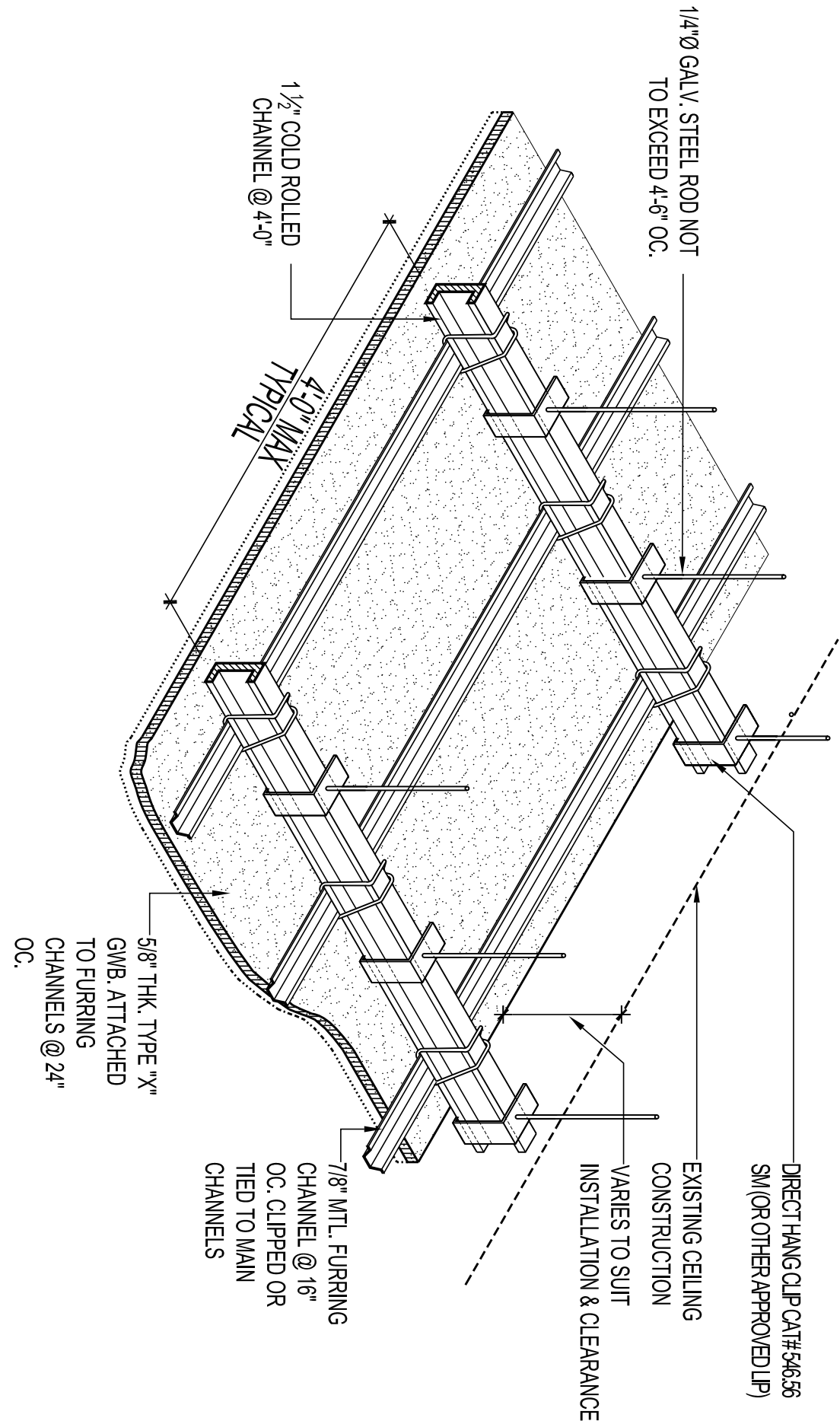
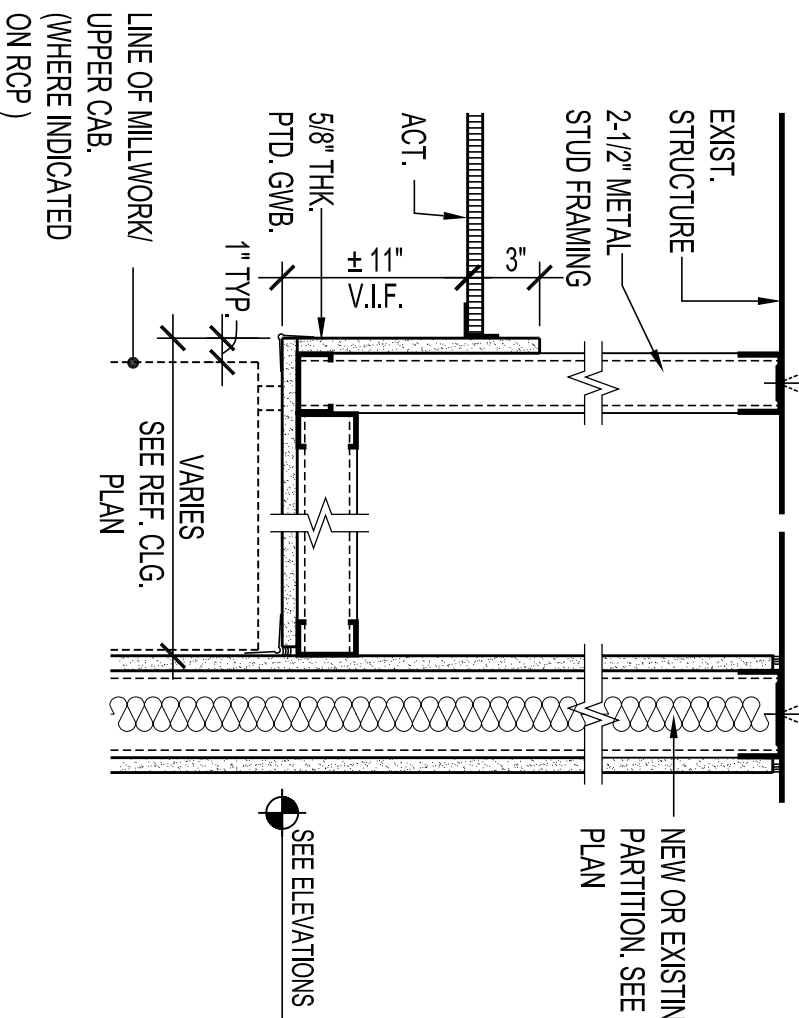


1
SCALE: 1 1/2"=1'-0"

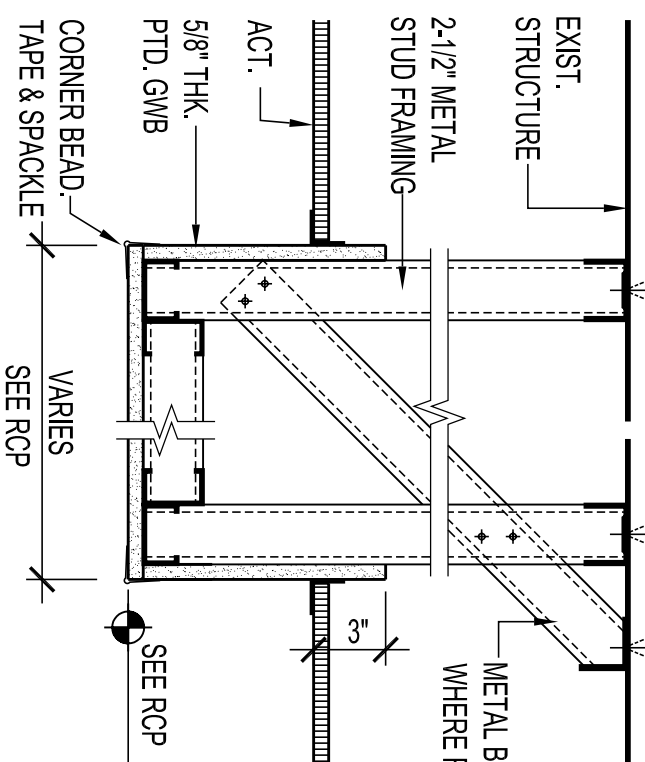
- NOTES:
1. AT EACH END OF LIGHT FIXTURE AN INTERLOCKING CROSS TEE OR LOOKING TEE MUST BE USED.
 2. FIXTURES EXCEEDING 80 LBS. IN WEIGHT SHALL BE SUPPORTED INDEPENDENT OF CEILING SUSPENSION SYSTEM. FIXTURES WEIGHING 80 LBS. OR LESS MAY BE SUPPORTED FROM THE CARRYING CHANNELS. FIXTURES WEIGHING 80 LBS. OR LESS MAY BE SUPPORTED BY MAIN RUNNERS, COORDINATE WITH LIGHTING FIXTURE AND HVAC SCHEDULES AND MANUFACTURERS.
 3. SURFACE OR PENDENT FIXTURES MUST BE INDEPENDENTLY SUPPORTED FROM 1 1/2" BLACK IRON FLOOR OR ROOF OF CONSTRUCTION.
 4. REFER TO DETAIL 3A-500.00 FOR CEILING CLIP INFORMATION.



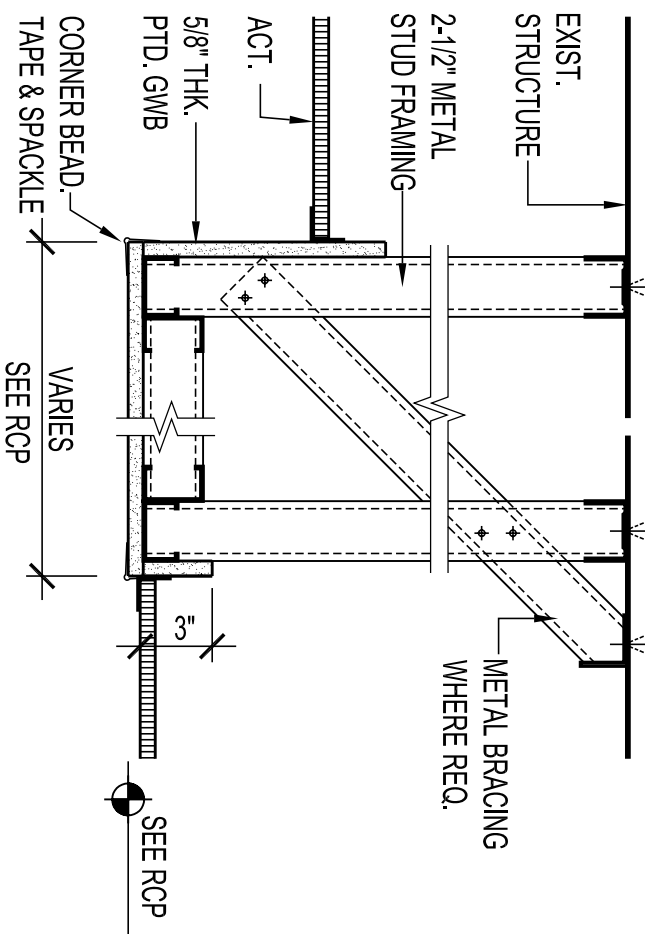
2
SCALE: 1 1/2"=1'-0"



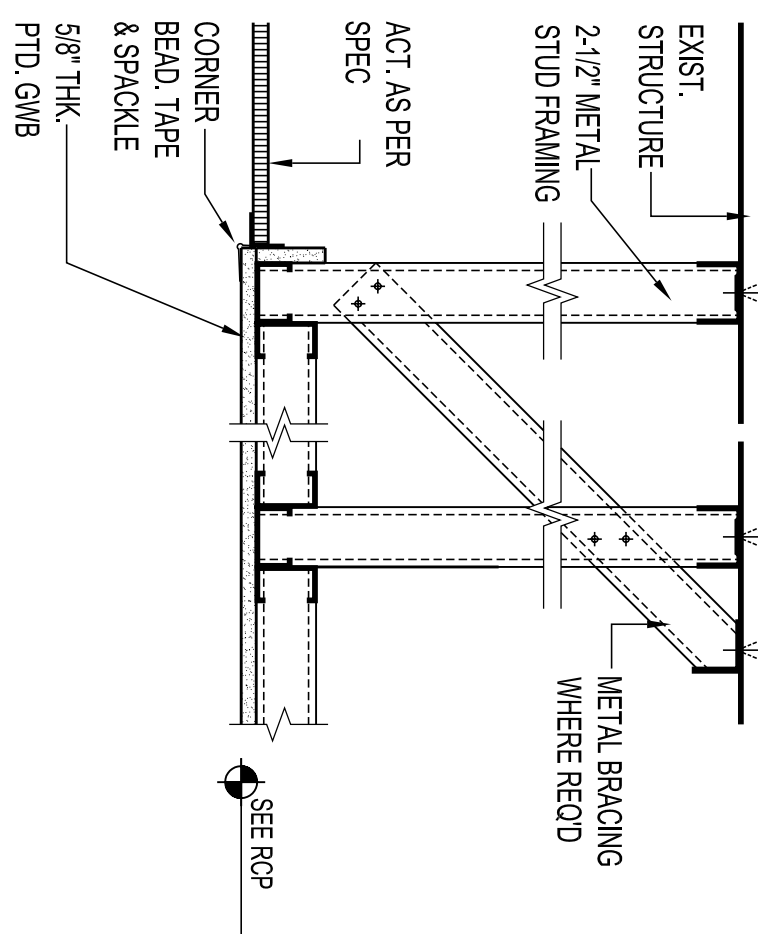
3
SCALE: 1 1/2"=1'-0"



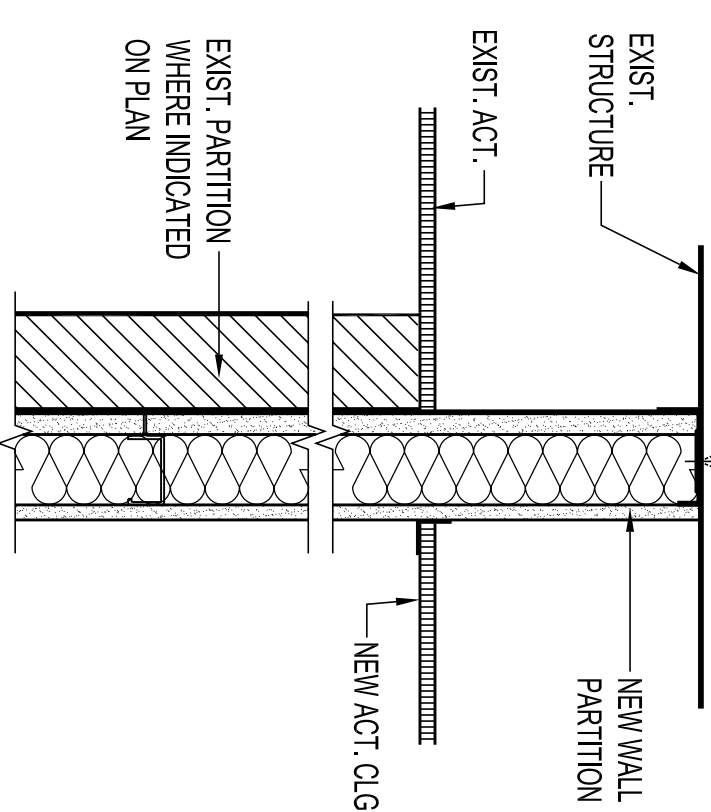
4
SCALE: 1 1/2"=1'-0"



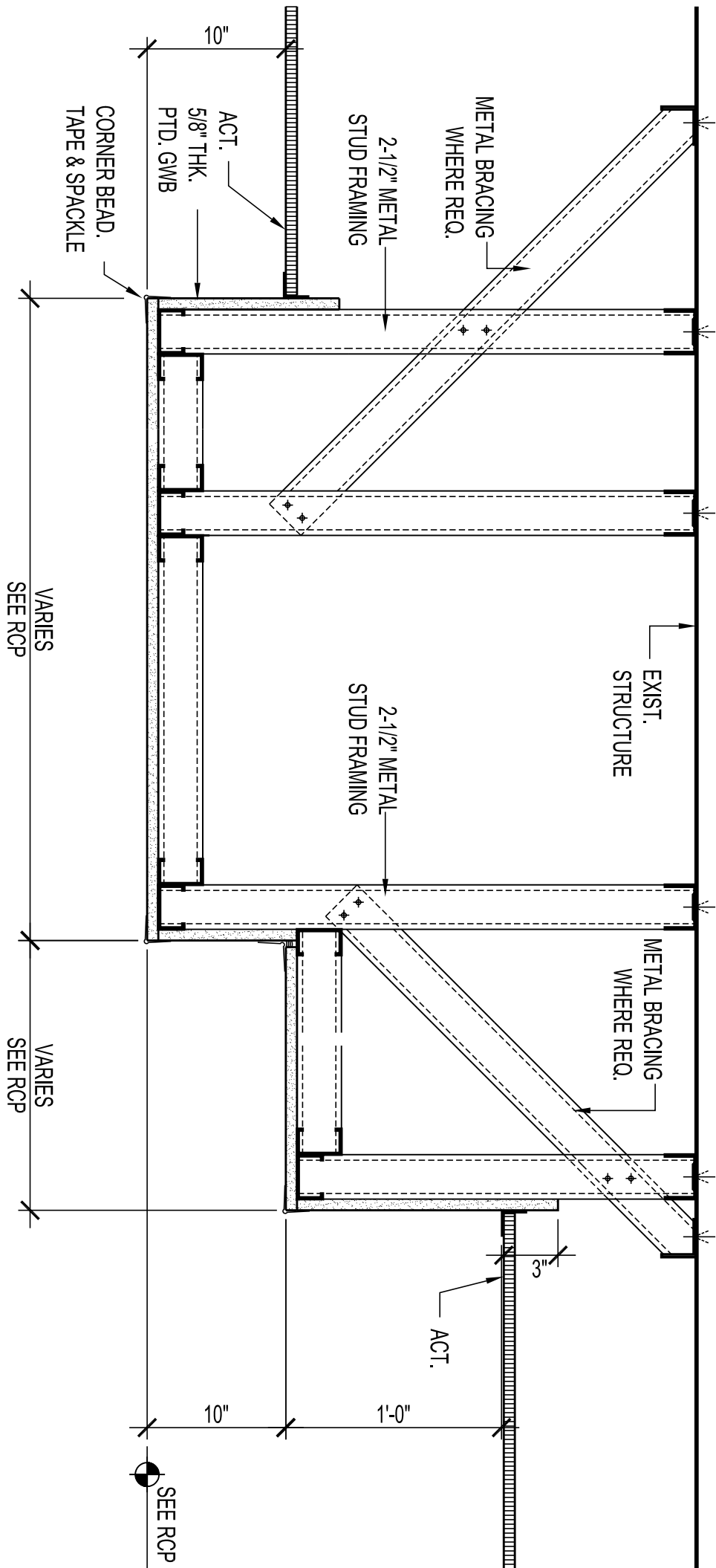
5
SCALE: 1 1/2"=1'-0"



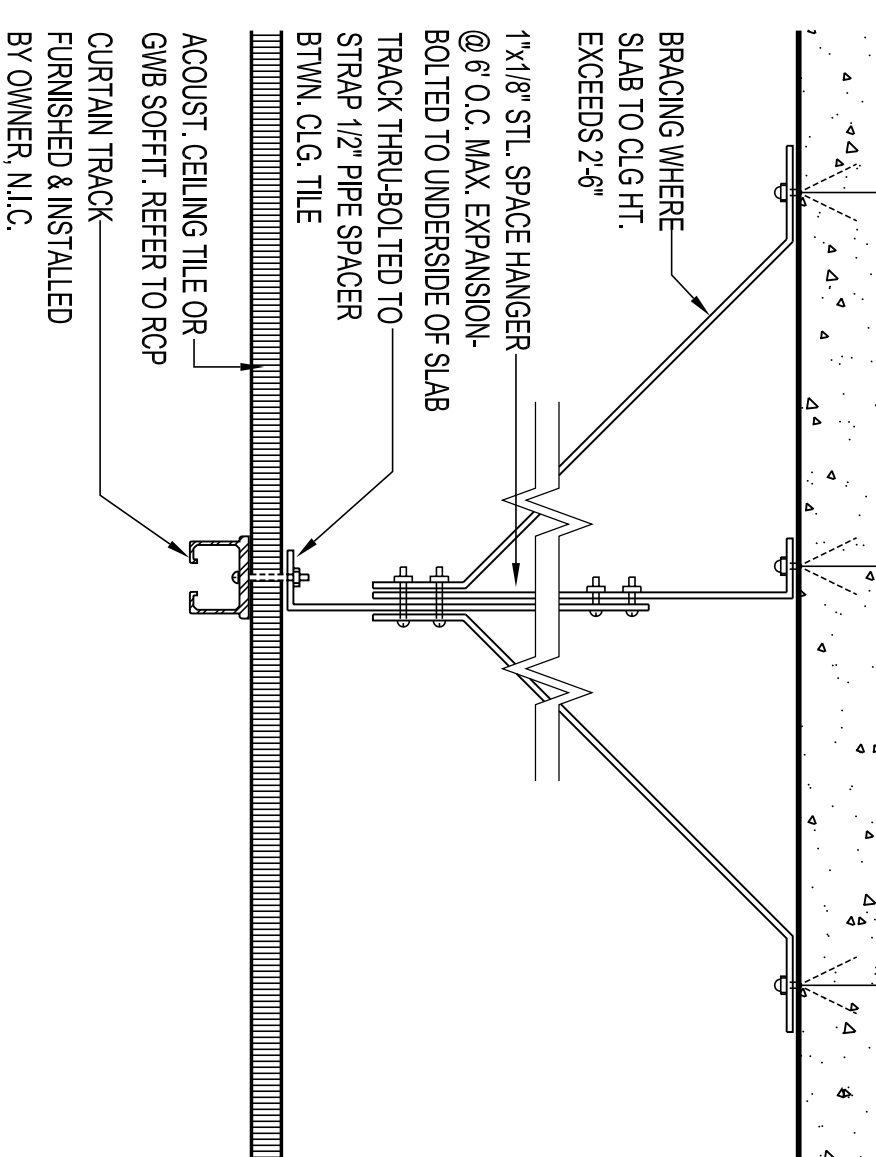
6
SCALE: 1 1/2"=1'-0"



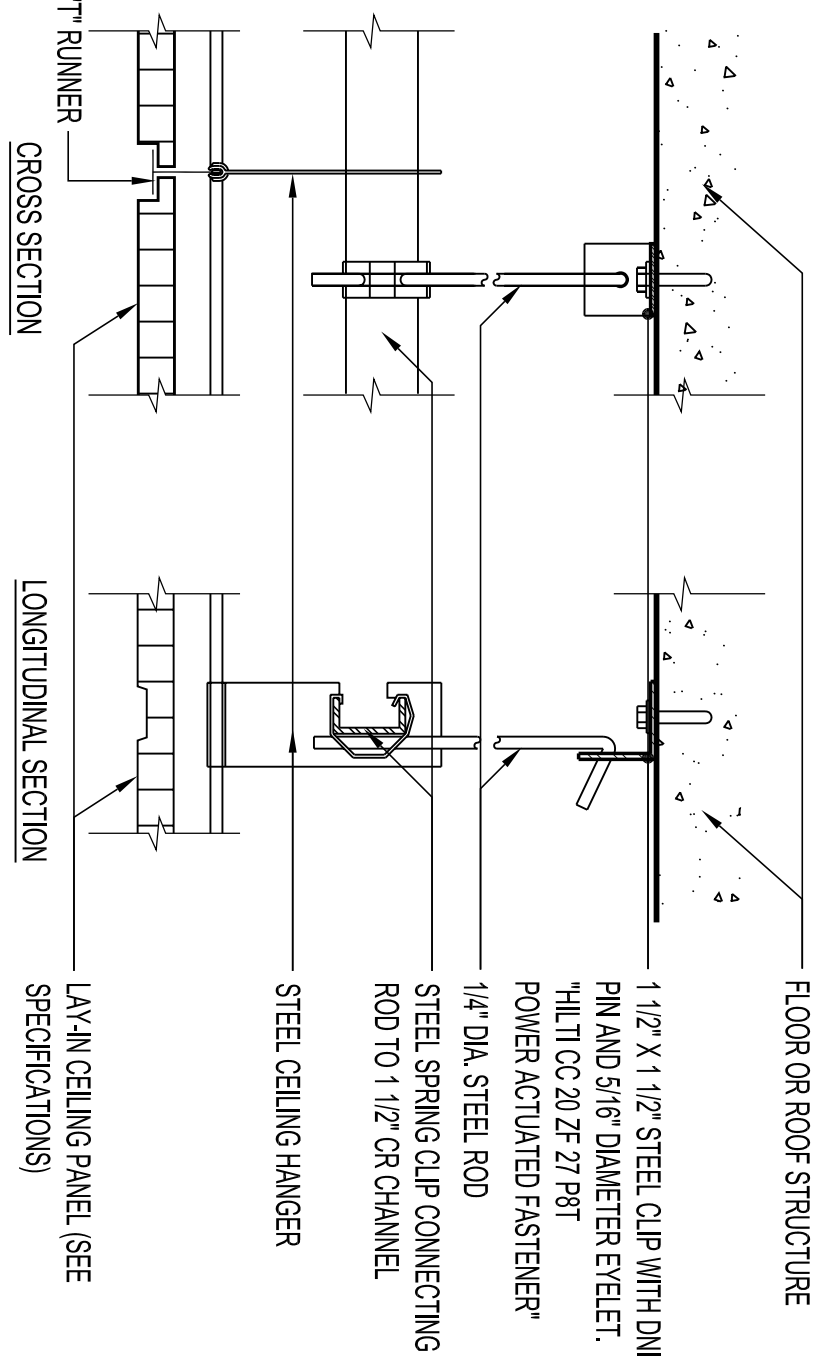
7
SCALE: 1 1/2"=1'-0"



8
SCALE: 1 1/2"=1'-0"



9
SCALE: 3/4"=1'-0"

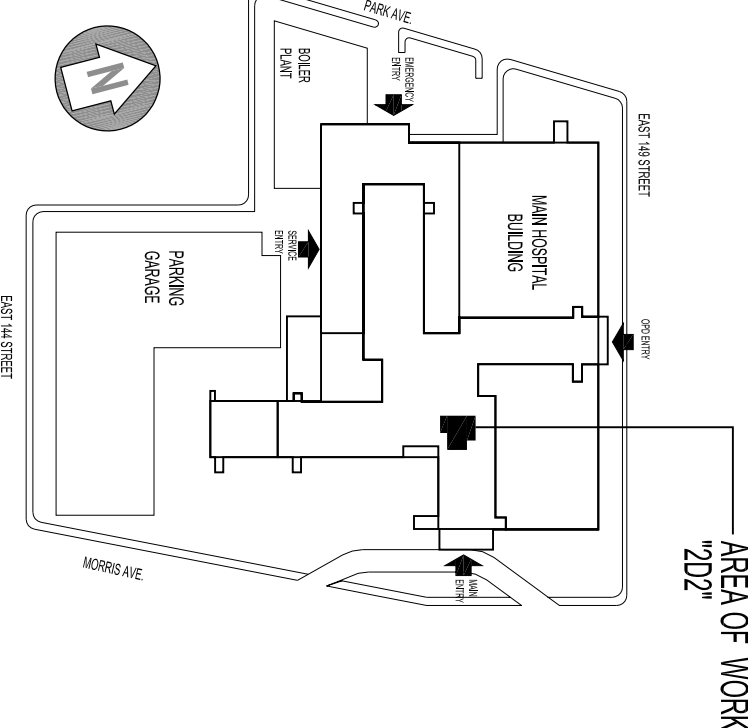


10
SCALE: 3/4"=1'-0"

DOB EMPLOYEE STAMPS AND SIGNATURES		DOB ESCAN STUBBER

REVISION	DATE	ISSUED FOR OWNER REVIEW	REASON FOR ISSUE
06-05-2012		ISSUED TO DOB	
11-03-2011		ISSUED FOR OWNER REVIEW	

KEY PLAN :



CLIENT
NEW YORK CITY HEALTH AND HOSPITALS CORPORATION

CLIENT
MENTAL HEALTH CENTER
234 East 149th Street Bronx, New York 10451

ARCHITECT:
M J C L Architects, PLLC
1416 Avenue M, Breehan, NY 11201
TEL: (718) 358-5390 Fax: (718) 595-8462

ENVIRONMENTAL ENGINEERING CONSULTANT:
Lilker Associates Consulting Engineers, PC
1001 Avenue of the Americas, New York, NY 10018
tel 212.695.1000 fax 212.695.1299 www.lilker.com

PROJECT:
NEW CLINIC RENOVATION AT SECOND FLOOR
234 East 149 Street Bronx, NY 10451

DRAWING:

CEILING DETAILS

SCALE : AS SHOWN		DRAWING # :
DRAWN BY : CAD		A-500.00
CHECKED BY : VC		
DATE : 09-06-2011		
JOB # : 21115.00		20 of 36