


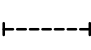



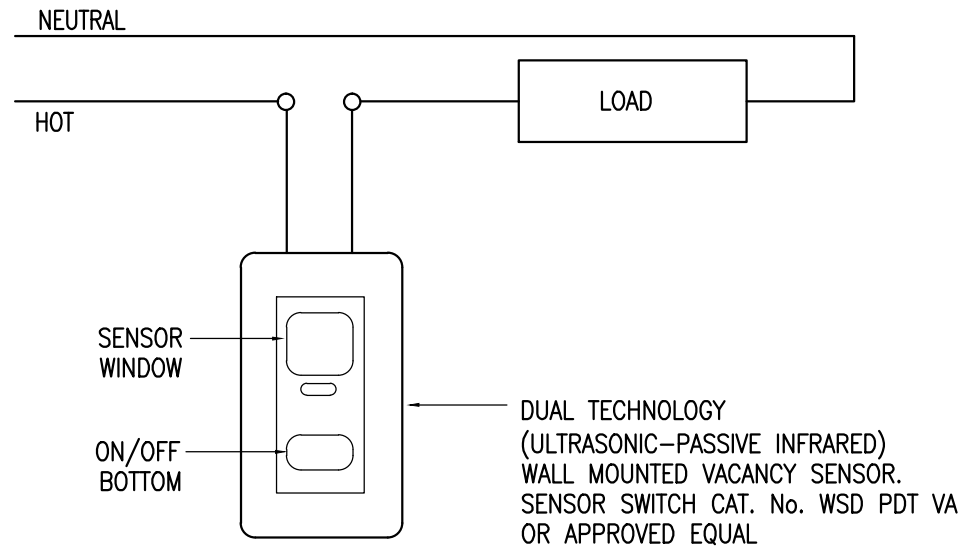


LIGHTING FIXTURE SCHEDULE							
SYMBOL	DESCRIPTION	LAMP			MANUFACTURER	CATALOG NUMBER	REMARKS
		QTY.	TYPE	WATTAGE			
 A	2'x2' RECESSED FLUORESCENT DIRECT/INDIRECT	2	BIAX	40	NATIONAL LIGHTING	AST/CB-2X2-2-40-277V	
 A1	2'x2' RECESSED FLUORESCENT DIRECT/INDIRECT	1	BIAX	55	NATIONAL LIGHTING	AFFINE-22-155BX-*	* PROVIDE EMERGENCY BATTERY BACK-UP AS INDICATED ON PLANS.
 D	FLUORESCENT STRIPLIGHT	2	T8	32	NATIONAL LIGHTING	132 CR SERIES	
 E	UNDERCABINET FLUORESCENT TASK LIGHT WITH INTEGRAL ROCKER SWITCH	1	T8	32	PROVIDED BY OTHERS		
	SURE-LITES LED EXIT SIGN	1	LED	5	COOPER LIGHTING	EEX SERIES	* FINISHES SHALL BE AS DIRECTED BY ARCHITECT. ** NUMBER OF FACES AND DIRECTIONAL ARROWS AS SHOWN ON PLAN.

NOTES:

1. LIGHTING FIXTURE SCHEDULE IS FOR REFERENCE ONLY. CONTRACTOR TO COORDINATE ALL FIXTURE QUANTITIES, LOCATIONS AND CATALOG NUMBERS WITH ARCHITECTURAL DRAWINGS.
2. ALL LIGHTING FIXTURES ARE SPECIFIED AT 277V, UNLESS OTHERWISE NOTED.
3. HALF SHADED LIGHTING FIXTURE () WITH 'EM' DENOTES FIXTURE IS FED BY CIRCUIT BACKED UP BY EMERGENCY GENERATOR.
4. HALF SHADED LIGHTING FIXTURE () WITH 'EMB' DENOTES FIXTURE IS PROVIDED WITH EMERGENCY BATTERY BACK-UP. COORDINATE WITH MANUFACTURE FOR EXACT REQUIREMENTS.

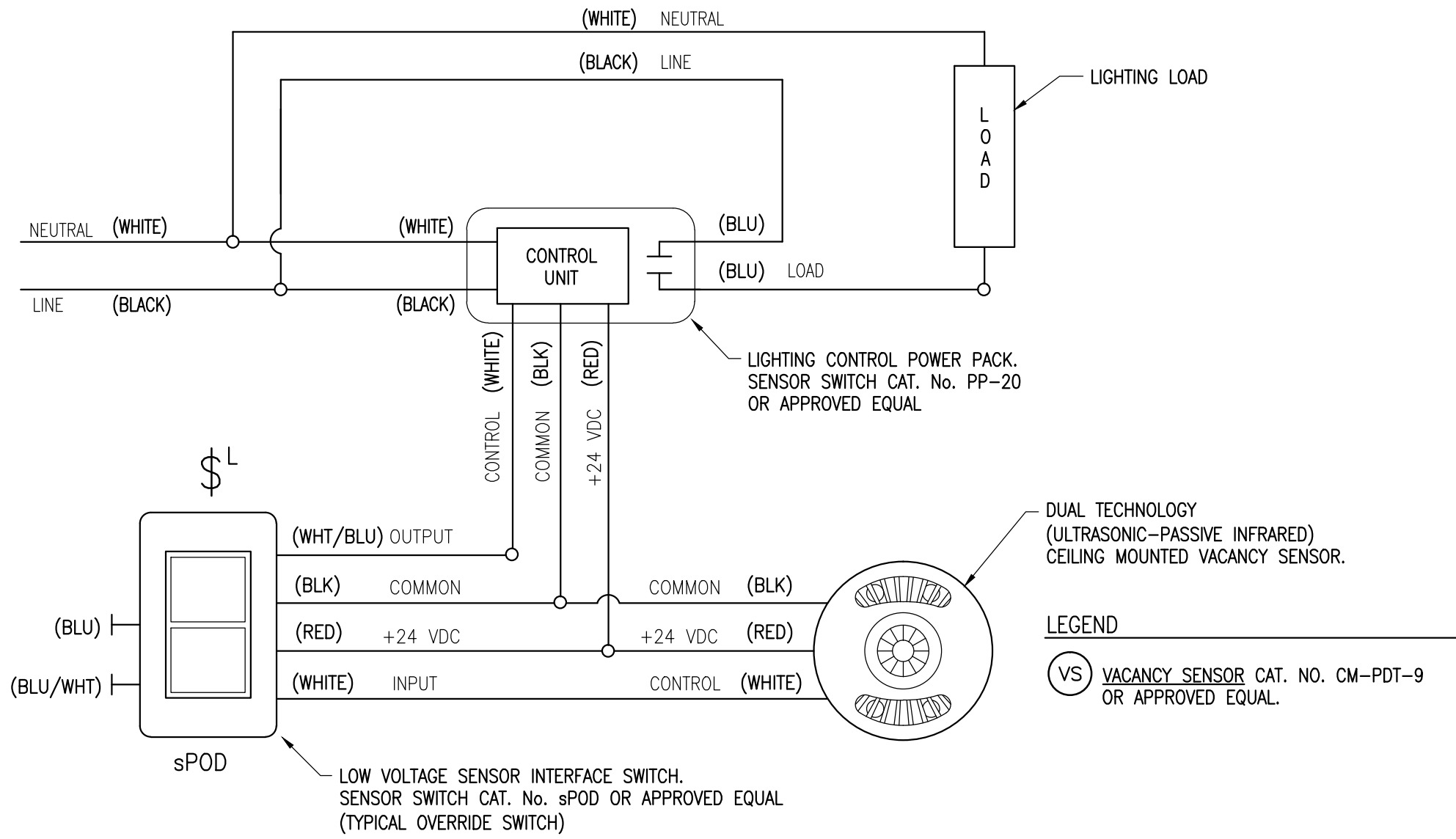


NOTES:

1. WALL MOUNTED VACANCY SENSOR SHALL BE PROGRAMMED IN A WAY THAT ONLY ENABLE LIGHTING TO BE TURNED ON BY MANUAL CONTROL, AND AUTOMATICALLY TURN LIGHTING OFF WITHIN A MAXIMUM OF 30 MINUTES FOLLOWING ALL OCCUPANTS LEAVING THE SPACE. LIGHTING SHALL BE ABLE TO BE TURNED OFF BY MANUAL CONTROL. THE OCCUPANT SENSOR MAY HAVE A GRACE PERIOD OF UP TO 30 SECONDS TO TURN ON THE LIGHTING AUTOMATICALLY AFTER THE SENSOR HAS TURNED OFF THE LIGHTING IF OCCUPANCY IS DETECTED.

TYPICAL WALL MOUNTED VACANCY SENSOR WIRING DETAIL

NOT TO SCALE



NOTES:

1. CEILING MOUNTED VACANCY SENSOR AND WALL SWITCH SHALL BE INSTALLED IN SUCH A WAY THAT WILL ONLY ENABLE LIGHTING TO BE TURNED ON BY MANUAL CONTROL, AND SHALL AUTOMATICALLY TURN OFF THE LIGHTING WITHIN A MAXIMUM OF 30 MINUTES FOLLOWING ALL OCCUPANTS LEAVING THE SPACE. LIGHTING SHALL BE ABLE TO BE TURNED OFF BY MANUAL CONTROL. THE OCCUPANT SENSOR MAY HAVE A GRACE PERIOD OF UP TO 30 SECONDS TO TURN ON THE LIGHTING AUTOMATICALLY AFTER THE SENSOR HAS TURNED OFF THE LIGHTING IF OCCUPANCY IS DETECTED.

TYPICAL CEILING MOUNTED VACANCY SENSOR W/ MANUAL SWITCH WIRING DETAIL

NOT TO SCALE

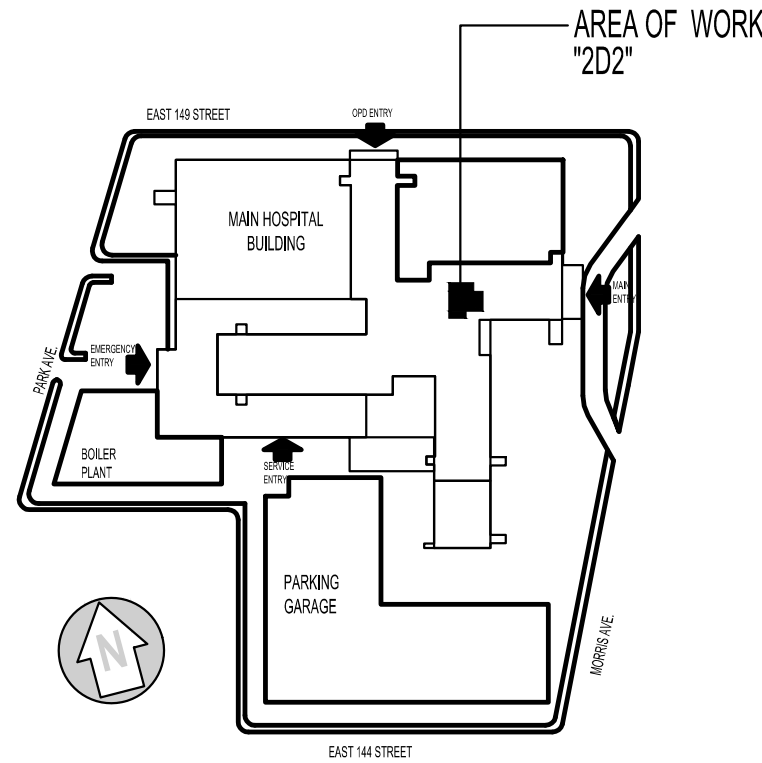
PROGRESS  
11-02-2011

DOB EMPLOYEE STAMPS AND SIGNATURES:

DOB BSCAN  
STICKER:

REVISION DATE REASON FOR ISSUE

KEY PLAN :



CLIENT:

**HHC** NEW YORK CITY  
HEALTH AND  
HOSPITALS  
CORPORATION

CLIENT:

 LINCOLN MEDICAL AND  
MENTAL HEALTH CENTER 

ARCHITECT:

**M J C L**  
Architects, PLLC  
1416 Avenue M, Brooklyn, NY 11230  
Tel.: (718) 339-3390 Fax: (718) 339-3642

ENVIRONMENTAL ENGINEERING CONSULTANT:

**Lilker Associates**  
Consulting Engineers, PC  
1001 Avenue of the Americas, New York, NY 10018  
tel. 212.695.1000 fax 212.695.1299 www.lilker.com

PROJECT:

NEW CLINIC RENOVATION AT SECOND FLOOR

DRAWING:

ELECTRICAL DETAILS  
SHEET No. 1

SCALE: NONE

DRAWN BY: CP

CHECKED BY: GA

DATE: 09-06-2011

JOB #: 21115.00

DRAWING #:

E-401.00

THIS PLAN IS APPROVED ONLY FOR WORK INDICATED ON THE APPLICATION SPECIFICATION SHEET. ALL OTHER MATTERS SHOWN ARE NOT TO BE RELIED UPON, OR TO BE CONSIDERED AS EITHER BEING APPROVED OR IN ACCORDANCE WITH APPLICABLE CODES.