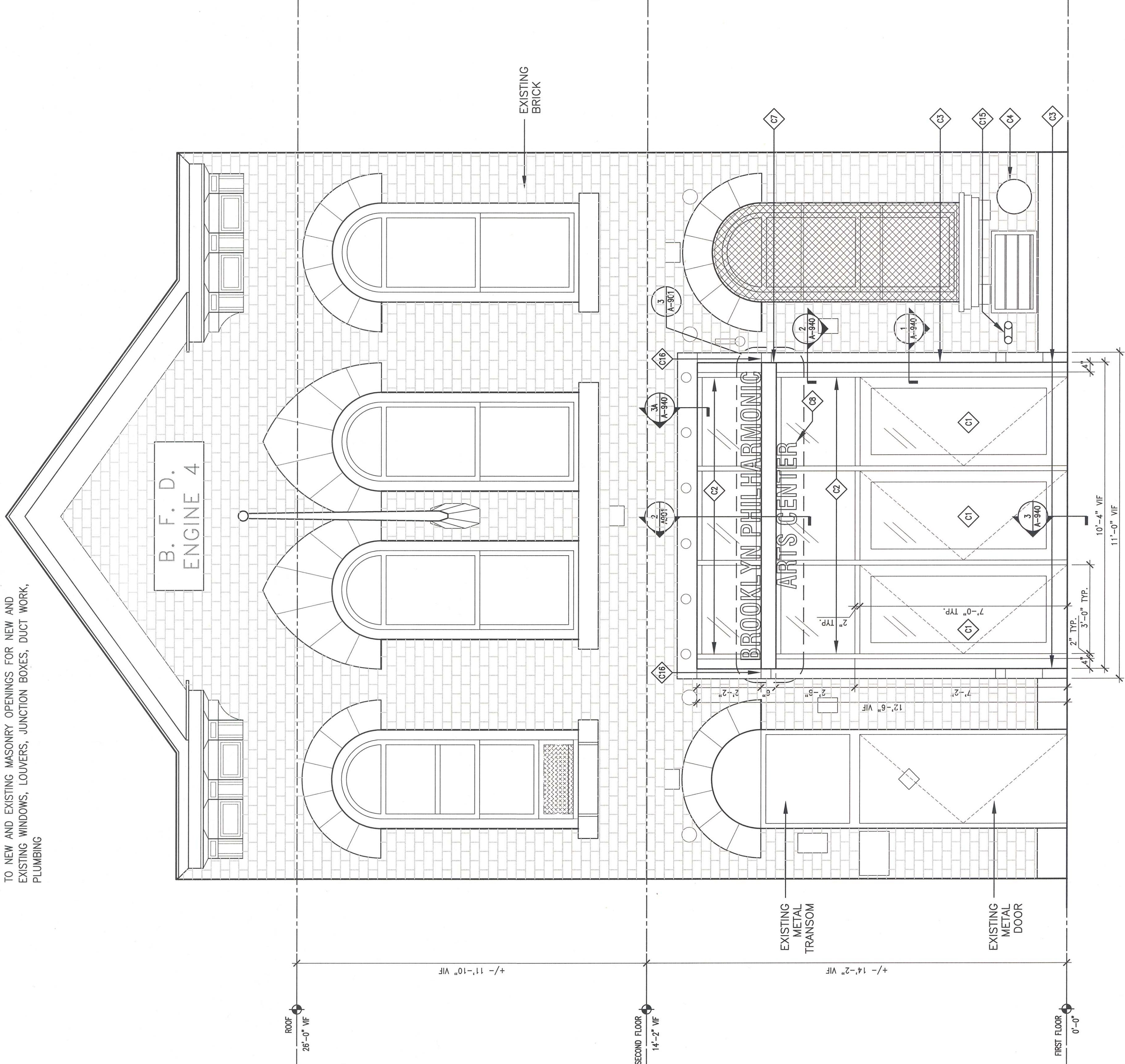


GENERAL NOTE:

PROVIDE AT ALL EXTERIOR MASONRY OPENINGS EXTERIOR WALL SEALANT AND BACKER ROD. THIS WILL INCLUDE BUT NOT LIMITED TO NEW AND EXISTING MASONRY OPENINGS FOR NEW AND EXISTING WINDOWS, LOUVERS, JUNCTION BOXES, DUCT WORK, PLUMBING



ELEVATION KEY NOTES

REFER TO SHEET A-003 FOR ADDITIONAL NOTES

- C1 NEW ALUMINUM SWING ENTRANCE DOORS (SERIES D302 MEDIUM STILE, INSIDE GLAZED, 1" INSULATED GLAZING) BY EFCCO CORPORATION, MONETT, MO, 800.221.4169 OR APPROVED EQUAL.
- C2 NEW ALUMINUM THERMAL STOREFRONT FRAMING (SERIES 403-1, SCREW SPUNE, INSIDE GLAZED, 1" INSULATED GLAZING) BY EFCCO CORPORATION, MONETT, MO, 800.221.4169 OR APPROVED EQUAL.
- C3 PATCH, MAKE SMOOTH AND PREP EXISTING METAL FRAME FOR NEW PAINT FINISH; PAINT COLOR TBD BY ARCHITECT
- C4 NEW GAS METER VENT & FACEPLATE; REFER TO MECHANICAL DOCUMENTS; MASONRY OPENING TO BE WATERTIGHT
- C7 NEW FORMED 10'-4"+/- WIDE ALUMINUM COMPOSITE METAL ENCLOSURE. ENCLOSURE TO EXTEND 10" BEYOND EXTERIOR FACE OF EXISTING MASONRY WALL. ENCLOSURE TO BE WATERTIGHT AND ENCLOSED ON ALL SIDES. PITCH TOP OF ENCLOSURE 1/4" AWAY FROM NEW STOREFRONT.

EXTERIOR DIMENSIONAL LETTERS.

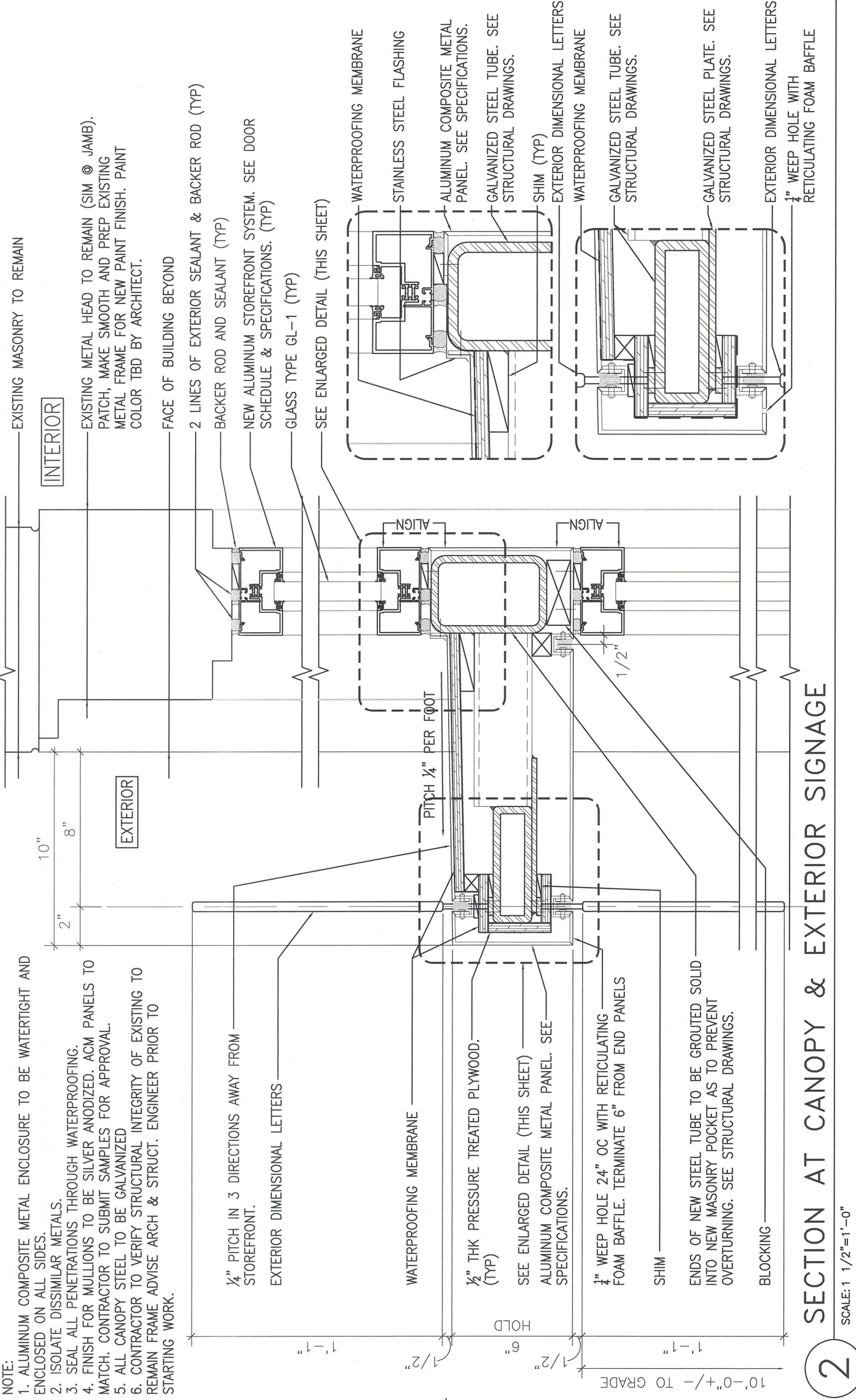
- C9 NEW 1900 CFM/2 SQ. FT. FREE AREA LOUVER. PROVIDE INSULATED SECTION. PROVIDE UNFINISHED SECTION OF LOUVER. SEE SPECIFICATIONS & MECHANICAL DRAWINGS.
- C10 NEW 2400 CFM/10.9 SQ. FT. FREE AREA LOUVER. PROVIDE INSULATED BLANK-OFF PANEL AT UNUSED SECTION OF LOUVER. SEE SPECIFICATIONS & MECHANICAL DRAWINGS.
- C11 NEW SIAMSESE CONNECTION. SEE FIRE PROTECTION DRAWINGS. MASONRY OPENING TO BE WATERTIGHT.
- C12 NEW HORIZONTALLY INSTALLED STEEL TUBE. SEE STRUCTURAL DRAWINGS; POCKET TO RECEIVE NEW STEEL TUBE TO BE TIGHT TO MASONRY TO PREVENT OVERTURNING. PATCH AND REPAIR ALL BRICK WORK AS REQUIRED TO MATCH EXISTING.

1

SOUTH ELEVATION

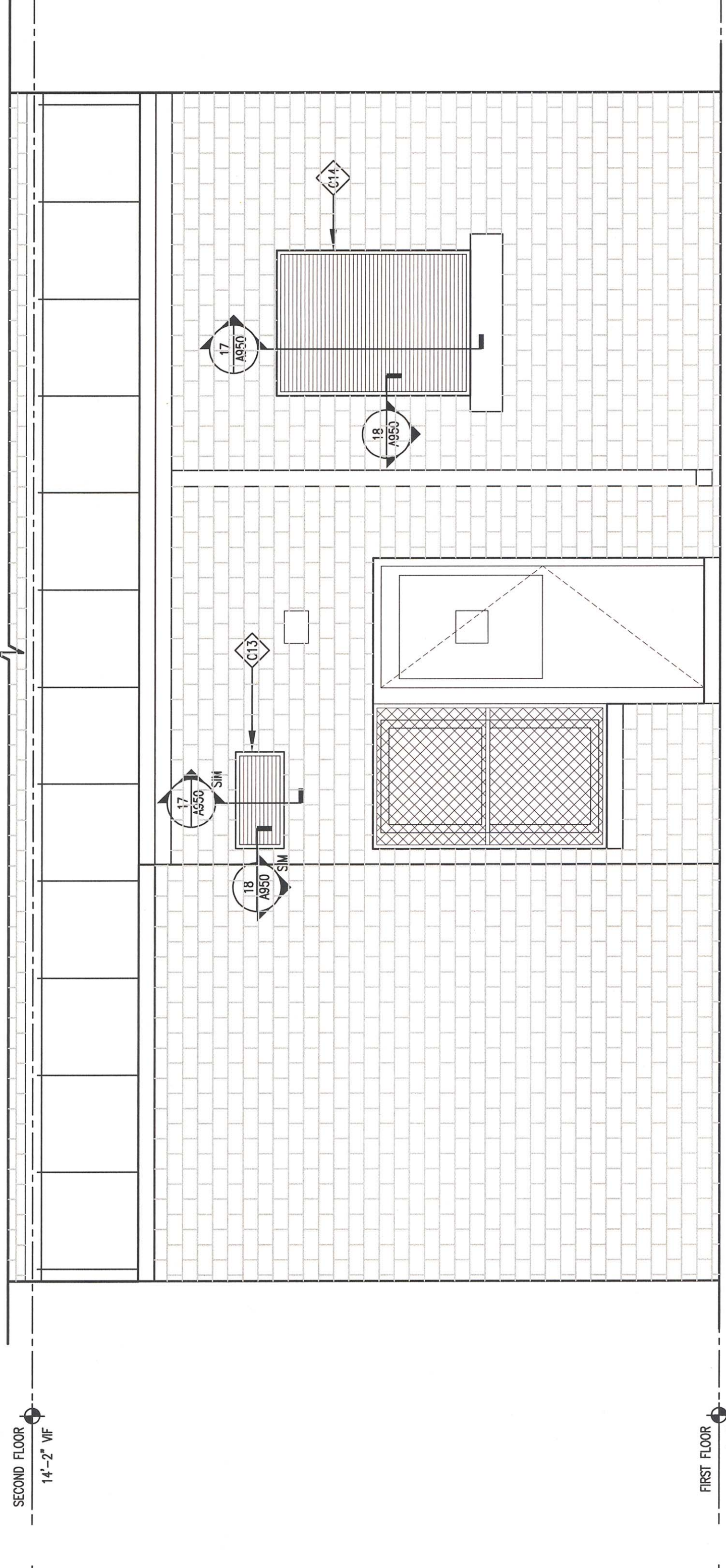
SCALE: 1/2" = 1'-0"

- NOTE:
1. ALUMINUM COMPOSITE METAL ENCLOSURE TO BE WATERTIGHT AND ENCLOSED ON ALL SIDES.
 2. ISOLATE DISSIMILAR METALS.
 3. SEAL ALL PENETRATIONS THROUGH WATERPROOFING.
 4. FINISH FOR MASONRY TO BE SMOOTH AND PREP EXISTING.
 5. ALL CANOPY STEEL TO BE GALVANIZED.
 6. CONTRACTOR TO VERIFY STRUCTURAL INTEGRITY OF EXISTING TO REMAIN FRAME ADVISE ARCH & STRUCT. ENGINEER PRIOR TO STARTING WORK.



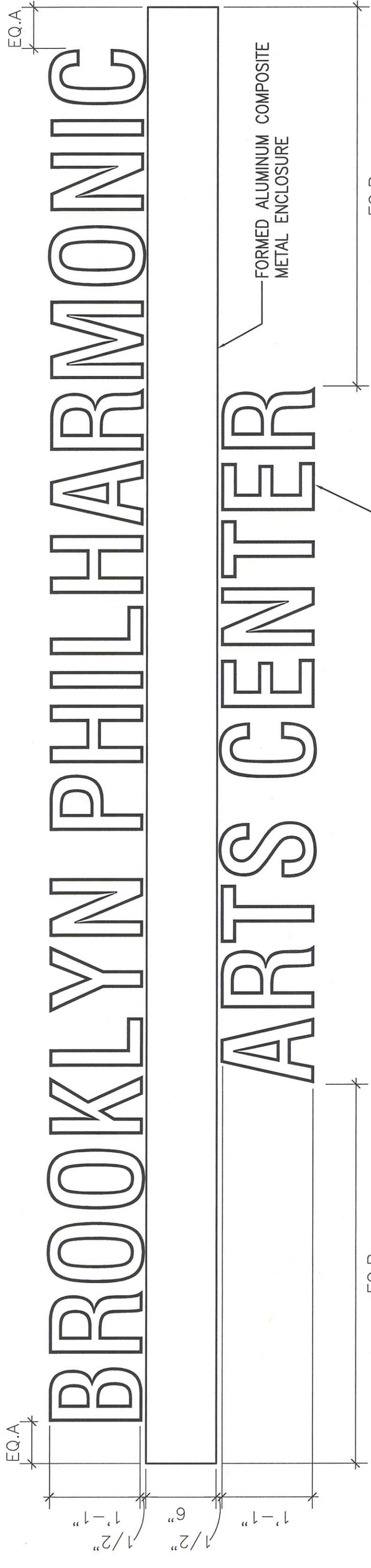
2 SECTION AT CANOPY & EXTERIOR SIGNAGE

SCALE: 1/2" = 1'-0"



1A PARTIAL NORTH ELEVATION

SCALE: 1/2" = 1'-0"



3 ENLARGED DETAIL AT EXTERIOR SIGNAGE

SCALE: 1/2" = 1'-0"

Project
**BROOKLYN
PHILHARMONIC
MUSIC CENTER**
299 DeGraw Street, Brooklyn, NY 11231

Prepared for
Brooklyn Philharmonic
55 Washington Street, Suite 656
Brooklyn, NY 11201

Contract No: 79.07250.09



HOK
106 Avenue of the Americas
New York, NY 10038
t +1 212 741 1200 f +1 212 633 1163

Architectural & Individual property rights reserved © 2012
In Association with:



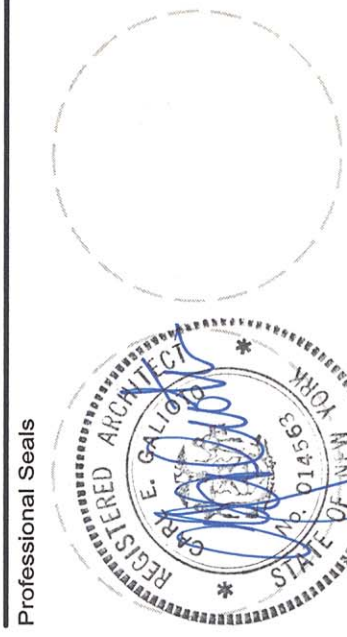
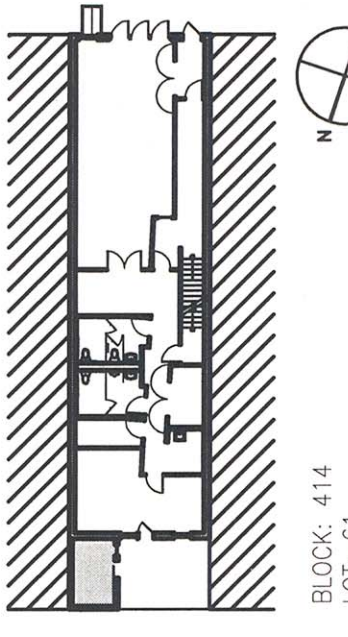
**NEW YORK CITY DEPARTMENT OF
DESIGN + CONSTRUCTION**
NYC Department of Design & Construction
32-30 Thompson Avenue, 8S-078
Long Island City, NY 11101

Old Structures
111 Broadway, 14th Floor
New York, NY 10006

M-E Engineers
25 West 58th Street, 5th Floor
New York, NY 10018

Syska Hennessy Group
Lighting Consultant
25 West 58th Street, 5th Floor
New York, NY 10018

Key Plan



No. Issue Description
1 MM-DD-YYYY
2 ISSUED FOR BID
3 ISSUED FOR BID
4 ISSUED FOR BID
5 ISSUED FOR BID
6 ISSUED FOR BID
7 ISSUED FOR BID
8 ISSUED FOR BID
9 ISSUED FOR BID
10 ISSUED FOR BID
11 ISSUED FOR BID
12 ISSUED FOR BID
13 ISSUED FOR BID
14 ISSUED FOR BID
15 ISSUED FOR BID
16 ISSUED FOR BID
17 ISSUED FOR BID
18 ISSUED FOR BID
19 ISSUED FOR BID
20 ISSUED FOR BID
21 ISSUED FOR BID
22 ISSUED FOR BID
23 ISSUED FOR BID
24 ISSUED FOR BID
25 ISSUED FOR BID
26 ISSUED FOR BID
27 ISSUED FOR BID
28 ISSUED FOR BID
29 ISSUED FOR BID
30 ISSUED FOR BID
31 ISSUED FOR BID
32 ISSUED FOR BID
33 ISSUED FOR BID
34 ISSUED FOR BID
35 ISSUED FOR BID
36 ISSUED FOR BID
37 ISSUED FOR BID
38 ISSUED FOR BID
39 ISSUED FOR BID
40 ISSUED FOR BID
41 ISSUED FOR BID
42 ISSUED FOR BID
43 ISSUED FOR BID
44 ISSUED FOR BID
45 ISSUED FOR BID
46 ISSUED FOR BID
47 ISSUED FOR BID
48 ISSUED FOR BID
49 ISSUED FOR BID
50 ISSUED FOR BID
51 ISSUED FOR BID
52 ISSUED FOR BID
53 ISSUED FOR BID
54 ISSUED FOR BID
55 ISSUED FOR BID
56 ISSUED FOR BID
57 ISSUED FOR BID
58 ISSUED FOR BID
59 ISSUED FOR BID
60 ISSUED FOR BID
61 ISSUED FOR BID
62 ISSUED FOR BID
63 ISSUED FOR BID
64 ISSUED FOR BID
65 ISSUED FOR BID
66 ISSUED FOR BID
67 ISSUED FOR BID
68 ISSUED FOR BID
69 ISSUED FOR BID
70 ISSUED FOR BID
71 ISSUED FOR BID
72 ISSUED FOR BID
73 ISSUED FOR BID
74 ISSUED FOR BID
75 ISSUED FOR BID
76 ISSUED FOR BID
77 ISSUED FOR BID
78 ISSUED FOR BID
79 ISSUED FOR BID
80 ISSUED FOR BID
81 ISSUED FOR BID
82 ISSUED FOR BID
83 ISSUED FOR BID
84 ISSUED FOR BID
85 ISSUED FOR BID
86 ISSUED FOR BID
87 ISSUED FOR BID
88 ISSUED FOR BID
89 ISSUED FOR BID
90 ISSUED FOR BID
91 ISSUED FOR BID
92 ISSUED FOR BID
93 ISSUED FOR BID
94 ISSUED FOR BID
95 ISSUED FOR BID
96 ISSUED FOR BID
97 ISSUED FOR BID
98 ISSUED FOR BID
99 ISSUED FOR BID
100 ISSUED FOR BID

No. Revision Description
MM-DD-YYYY

Drawn by: SJ Reviewed by: SW
Project No: 79.07250.09
Date: June 1, 2011
CAPS ID: PV467BPHL
Sheet Title: EXTERIOR ELEVATION: PHASE 1

Sheet Number

A-901.00

Original drawings in 42 x 36. Do not scale contents of this drawing.